

# KAYNAK BOYUNLU FLANŞ PN 10



TS EN 1092 - 1 + A1 TİP 11  
DIN 2632

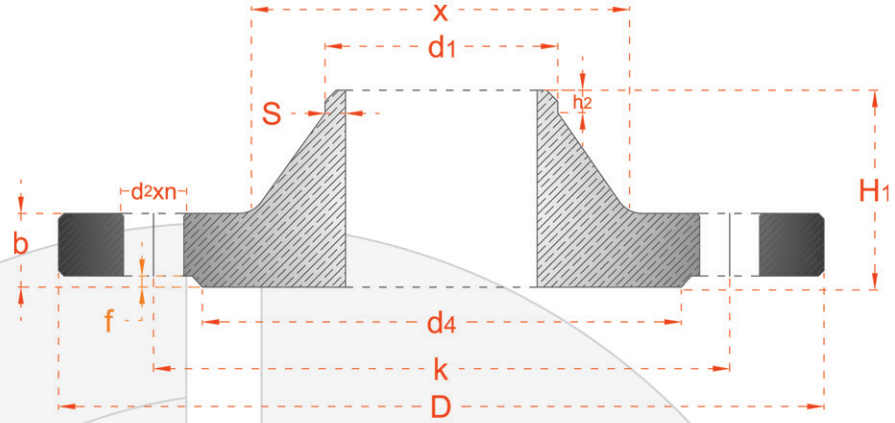


**E.M.P.**  
www.emp.com.tr  
www.empflans.com

# WELDING NECK FLANGE PN 10



EN 1092 - 1 + A1 TYPE 11  
DIN 2632



BORU/PIPE	FLANŞ /FLANGE						BOYUN/ NECK			RAISED FACE		DELİKLER/DRILLINGS			AĞIRLIK WEIGHT	
	DN	d1	D	b		H <sub>1</sub>		x	s	h <sub>2</sub>	d <sub>4</sub>	f	k	n		vida /screw
EN 1092-1				DIN	EN 1092-1	DIN										
10	17.2	90	16	14	35	35	28	1.8	6	40	2	60	4	M12	14	0.58
15	21.3	95	16	14	38	35	32	2.0	6	45	2	65	4	M12	14	0.65
20	26.9	105	18	16	40	38	40	2.3	6	58	2	75	4	M12	14	0.95
25	33.7	115	18	16	40	38	45	2.6	6	68	2	85	4	M12	14	1.14
32	42.4	140	18	16	42	40	56	2.6	6	78	2	100	4	M16	18	1.69
40	48.3	150	18	16	45	42	64	2.6	7	88	3	110	4	M16	18	1.86
50	60.3	165	18	18	45	45	75	2.9	8	102	3	125	4	M16	18	2.53
65	76.1	185	18	18	45	45	90	2.9	10	122	3	145	4	M16	18	3.06
80	88.9	200	20	20	50	50	105	3.2	10	138	3	160	8	M16	18	3.70
100	114.3	220	20	20	52	52	131	3.6	12	158	3	180	8	M16	18	4.62
125	139.7	250	22	22	55	55	156	4.0	12	188	3	210	8	M16	18	6.30
150	168.3	285	22	22	55	55	184	4.5	12	212	3	240	8	M20	22	7.75
200	219.1	340	24	24	62	62	235	5.9	16	268	3	295	8	M20	22	11.3
250	273.0	395	26	26	68	68	292	6.3	16	320	3	350	12	M20	22	14.7
300	323.9	445	26	26	68	68	344	7.1	16	370	4	400	12	M20	22	17.4
350	355.6	505	26	26	68	68	385	7.1	16	430	4	460	16	M20	22	21.6
400	406.4	565	26	26	72	72	440	7.1	16	482	4	515	16	M24	26	26.2
450	457	615	28	28	72	72	488	7.1	16	532	4	565	20	M24	26	31.5
500	508	670	28	28	75	75	542	7.1	16	585	4	620	20	M24	26	38.1
600	610	780	30	28	82	80	642	7.1	18	685	5	725	20	M27	30	44.6
700	711	895	35	30	85	80	745	8.0	18	800	5	840	24	M27	30	62.4
800	813	1015	38	32	96	90	850	8.0	18	905	5	950	24	M30	33	84.1
900	914	1115	38	34	99	95	950	10	20	1005	5	1050	28	M30	33	98.5
1000	1016	1230	44	34	105	95	1052	10	20	1110	5	1160	28	M33	36	115.0
1200	1219	1455	55	38	132	115	1255	11	25	1330	5	1380	32	M36	39	182.0
1400	1422	1675	65	42	143	120	1460	12	25	1535	5	1590	36	M39	42	248.0
1600	1626	1915	75	46	159	130	1665	14	25	1760	5	1820	40	M45	48	347.0
1800	1829	2115	85	50	175	140	1868	15	30	1960	5	2020	44	M45	48	430.0
2000	2032	2325	90	54	186	150	2072	16	30	2170	5	2230	48	M45	48	539.0
2200	2235	2550	100	58	202	160	2275	18	35	2370	6	2440	52	M52	56	658.0
2400	2438	2760	110	62	218	170	2478	20	35	2570	6	2650	56	M52	56	825.0
2600	2620	2960	110	66	224	180	2680	22	40	2780	6	2850	60	M52	56	979.0
2800	2820	3180	124	70	244	190	2882	22	40	3000	6	3070	64	M52	56	1,156.0
3000	3020	3405	132	75	257	200	3085	24	45	3210	6	3290	68	M56	62	1,402.0

Ölçüler mm olarak verilmiştir.  
Çelik ve paslanmaz üretilebilir.

Dimensions are in mm.  
Steel and stainless steel can be produce.